

# Membuat Aplikasi Database dengan teknologi DCOM

- Modul Komponen DB Application

**Nama Class**

**Nama Project DLL**

```

Option Explicit
Dim StrConn As String
Public Conn As ADODB.Connection

Public Function KonekDB() As Boolean
    On Error Resume Next

    Set Conn = New ADODB.Connection
    StrConn = "Provider=Microsoft.Jet.OLEDB.4.0;Data Source=C:\tescom\BIBLIO.mdb;User Id=;Password="
    Conn.ConnectionString = StrConn
    Conn.Open

    If Conn.State = adStateOpen Then
        KonekDB = True
    Else
        KonekDB = False
    End If
End Function

Public Function ShowDB() As ADODB.Recordset
    Dim SQLShow As String
    Dim Stat As Boolean

    Set ShowDB = New ADODB.Recordset
    ShowDB.CursorLocation = adUseClient
    SQLShow = "SELECT * FROM titles"
    ShowDB.Open SQLShow, Conn, 1, 3
End Function
    
```

**Code :**  
 Function KonekDB()  
 Function ShowDB()

**Nama Class**

- Add References : ADO Object

**References - COMClassDb.vbp**

Available References:

- Microsoft ActiveX Data Objects 2.0 Library
- Microsoft ActiveX Data Objects 2.1 Library
- Microsoft ActiveX Data Objects 2.5 Library
- Microsoft ActiveX Data Objects 2.6 Library
- Microsoft ActiveX Data Objects 2.7 Library
- Microsoft ActiveX Data Objects 2.8 Library
- Microsoft ActiveX Data Objects Recordset 2.8 Library
- Microsoft ActiveX Plugin
- Microsoft Add-In Designer
- Microsoft ADO Ext. 2.8 for DDL and Security
- Microsoft Agent Control 2.0
- Microsoft Agent Server 2.0
- Microsoft Agent Server Extensions 2.0
- Microsoft AutoDiscovery Type Library

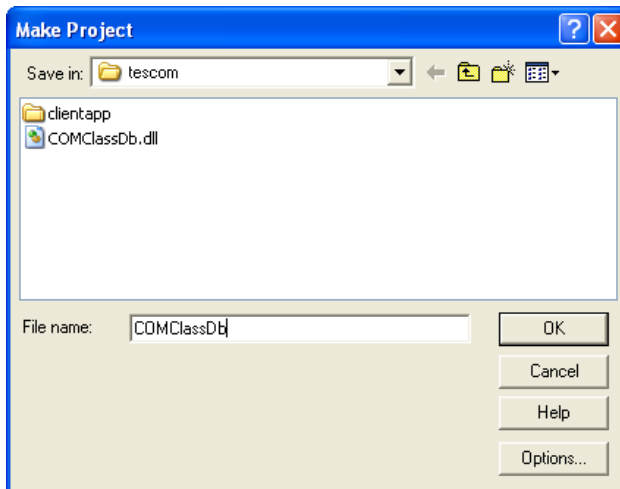
Priority: ↑ ↓

Microsoft ActiveX Data Objects 2.8 Library

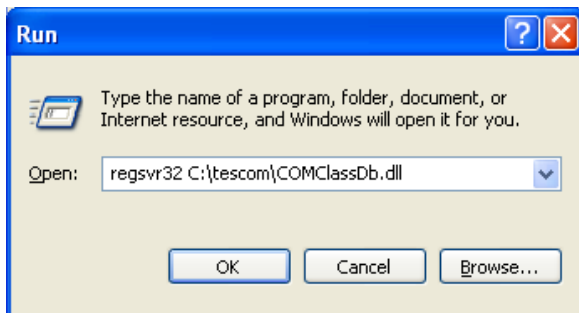
Location: C:\Program Files\Common Files\system\ado\msado15.dll

Language: Standard

- **Compile DLL**

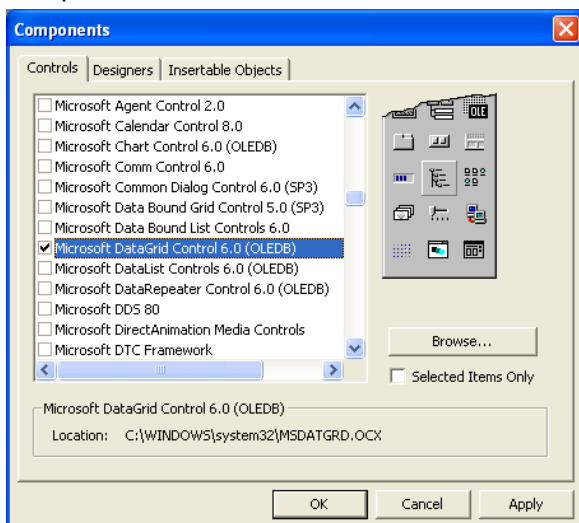


- **Registration DLL**

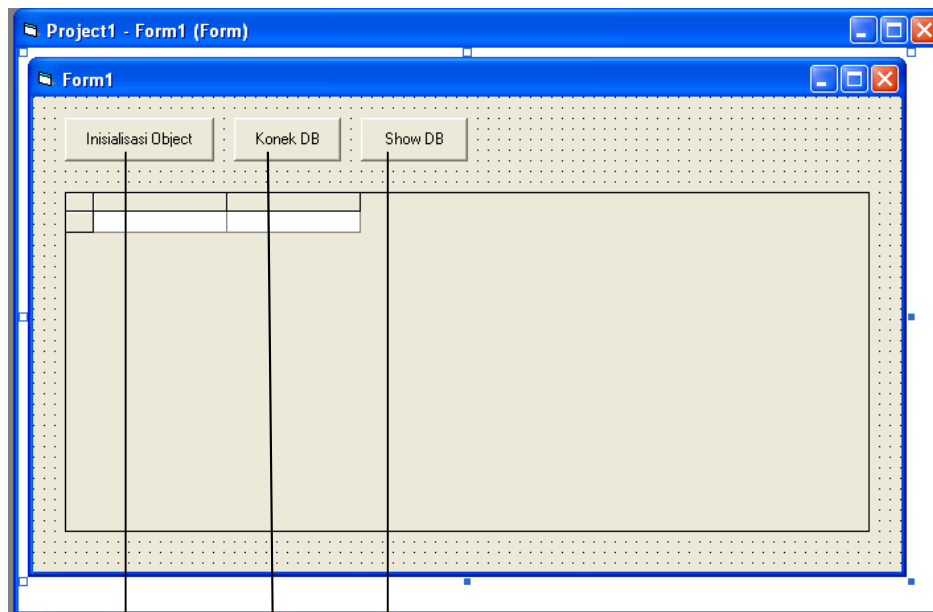


- **Buat Component Services (Lihat modul sebelumnya)**
- **Client Application – Include Components**

### Component VB



- Client Application - FORM



- Client Application - CODE

```

Dim WithEvents rsData As ADODB.Recordset
'Dim Stat As Boolean
Public objDB As Object

Public Sub objInit()
    Set objDB = CreateObject("COMClassDb.ClassDb")
End Sub

Private Sub cmdInis_Click()
    Call objInit
End Sub

Private Sub cmdKonekDB_Click()
    Dim Stat As Boolean

    'Set obj = CreateObject("COMClassDb.ClassDb")

    'Stat = obj.strCall("hello...")
    Stat = objDB.KonekDB()

    If Stat Then
        MsgBox "Login Sukses !!!"
    Else
        MsgBox "Login Gagal !!!"
    End If
End Sub

Private Sub cmdShowDB_Click()
    Set rsData = objDB.ShowDB()
    Set DataGrid1.DataSource = rsData
End Sub
  
```

Selamat mencoba!